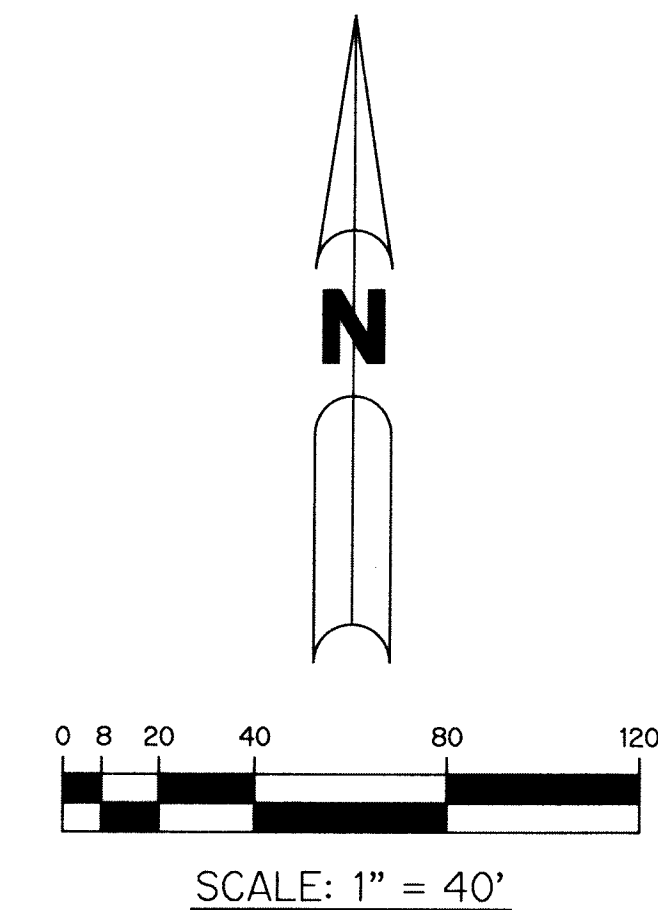
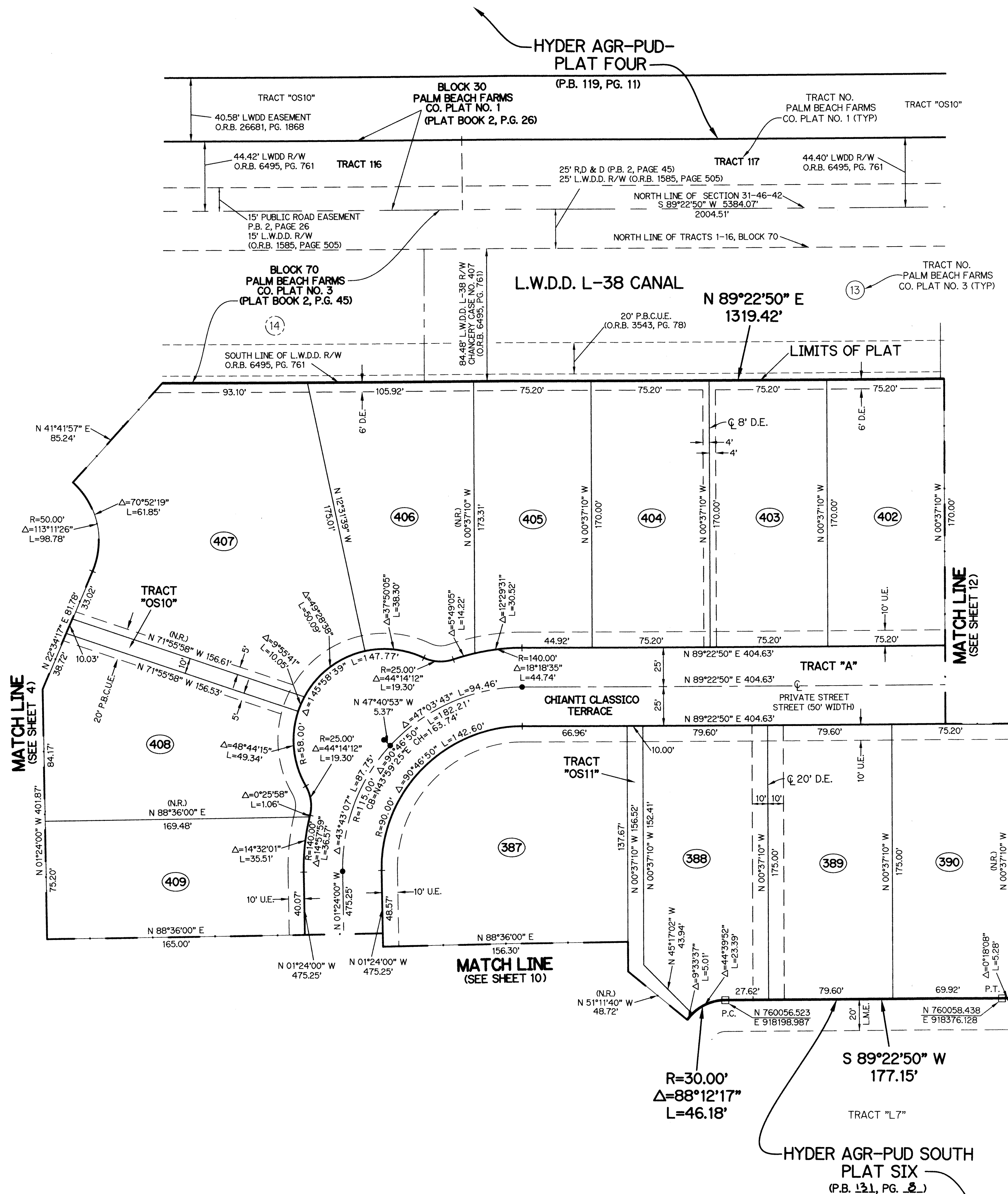


# HYDER AGR-PUD SOUTH PLAT SEVEN

BEING A REPLAT OF A PORTION OF TRACTS 11 THROUGH 20 AND 45 THROUGH 51, AND A PORTION OF THE ABUTTING ROAD, DYKE AND DITCH RESERVATION, 30.00 FEET IN WIDTH, ALL LYING IN BLOCK 70, PALM BEACH FARMS CO. PLAT NO. 3, AS RECORDED IN PLAT BOOK 2, PAGES 45 THROUGH 54, PUBLIC RECORDS, PALM BEACH COUNTY, FLORIDA, LYING IN SECTION 31, TOWNSHIP 46 SOUTH, RANGE 42 EAST.

SHEET 11 OF 13

57



- LEGEND:**
- - SET PERMANENT REFERENCE MONUMENT
  - - FOUND PERMANENT REFERENCE MONUMENT
  - - SET PERMANENT CONTROL POINT
  - - FOUND PERMANENT CONTROL POINT
  - AGR - AGRICULTURAL
  - BLK - BLOCK
  - CB - CHORD BEARING
  - CH - CHORD DISTANCE
  - C - CENTERLINE
  - D.B. - DEED BOOK
  - D.E. - PRIVATE DRAINAGE EASEMENT
  - F.P.L. - FLORIDA POWER & LIGHT
  - L - ARC LENGTH
  - L.A.E. - LIMITED ACCESS EASEMENT
  - LB - LICENSED BUSINESS
  - L.M.A.E. - LAKE MAINTENANCE ACCESS EASEMENT
  - L.M.E. - LAKE MAINTENANCE EASEMENT
  - L.W.D.D. - LAKE WORTH DRAINAGE DISTRICT
  - N.R. - NOT RADIAL
  - N.R.T.R. - NOT RADIAL TO REAR LINE
  - N.T. - NON-TANGENT
  - N.T.S. - NOT TO SCALE
  - O.R.B. - OFFICIAL RECORD BOOK
  - O.E. - MAINTENANCE & ROOF OVERHANG EASEMENT
  - P.B.C.O. - PALM BEACH COUNTY
  - P.B.C.U.E. - PALM BEACH COUNTY UTILITY EASEMENT
  - P.B. - PLAT BOOK
  - P.C. - POINT OF CURVATURE
  - P.C.C. - POINT OF COMPOUND CURVATURE
  - P.C.P. - PERMANENT CONTROL POINT
  - P.D.E. - PUBLIC DRAINAGE EASEMENT
  - PG. - PAGE
  - PGS. - PAGES
  - P.O.B. - POINT OF BEGINNING
  - P.N.R.I. - POINT OF NON-RADIAL INTERSECTION
  - P.N.T.I. - POINT OF NON-TANGENT INTERSECTION
  - P.O.C. - POINT OF COMMENCEMENT
  - P.O.I. - POINT OF INTERSECTION
  - P.R.C. - POINT OF REVERSE CURVATURE
  - P.R.I. - POINT OF RADIAL INTERSECTION
  - P.S.M. - PROFESSIONAL SURVEYOR AND MAPPER
  - P.T. - POINT OF TANGENCY
  - PUD - PLANNED UNIT DEVELOPMENT
  - R - RADIUS
  - RAD - RADIAL
  - R/W - RIGHT-OF-WAY
  - R.D. & D. - ROAD, DYKE AND DITCH RESERVATION
  - SIRC - SET 5/8" IRON ROD & CAP STAMPED "PRM LB7741"
  - SN&D - SET MAGNETIC NAIL & DISK STAMPED "PRM LB7741"
  - S.T. - SURVEY TIE
  - TYP. - TYPICAL
  - U.E. - UTILITY EASEMENT
- N=780000.00  
E=930000.00 - STATE PLANE COORDINATE VALUE

THIS INSTRUMENT WAS PREPARED BY  
PERRY C. WHITE, P.S.M. 4213, STATE OF FLORIDA  
SAND & HILLS SURVEYING, INC.  
8461 LAKE WORTH ROAD, SUITE 410  
LAKE WORTH, FLORIDA 33467  
LB-7741

**NOTES:**  
COORDINATES SHOWN ARE GRID COORDINATES DATUM = NAD 83 (1990 ADJUSTMENT)  
ZONE = FLORIDA EAST ZONE  
LINEAR UNIT = U.S. SURVEY FEET  
COORDINATE SYSTEM = 1983 STATE PLANE TRANSVERSE MERCATOR PROJECTION  
ALL DISTANCES ARE GROUND (UNLESS OTHERWISE NOTED)  
SCALE FACTOR = 1.00002237  
PLAT BEARING = GRID BEARING  
GROUND DISTANCE X SCALE FACTOR = GRID DISTANCE

